

Specification

STAGE1D

Exterior



Floor Structure

- Concrete floor slab to ground floor
- Suspended upper floor joists with particle board or ply flooring

Cladding

- James Hardie fibre cement weatherboard on a cavity system as per architect drawing
- NZ made bricks as per architects' drawing (if applicable)

Roof

- Prefinished profiled metal or long-run roofing with associated flashings on roof underlay

Fascia

- Powder-coated steel fascia with steel gutters and PVC downpipes

Entry Door

- Feature front door in powder coated aluminum joinery
- Digital lock

Windows and Aluminum Joinery

- Selected powder-coated aluminum heavy residential sections

Yard

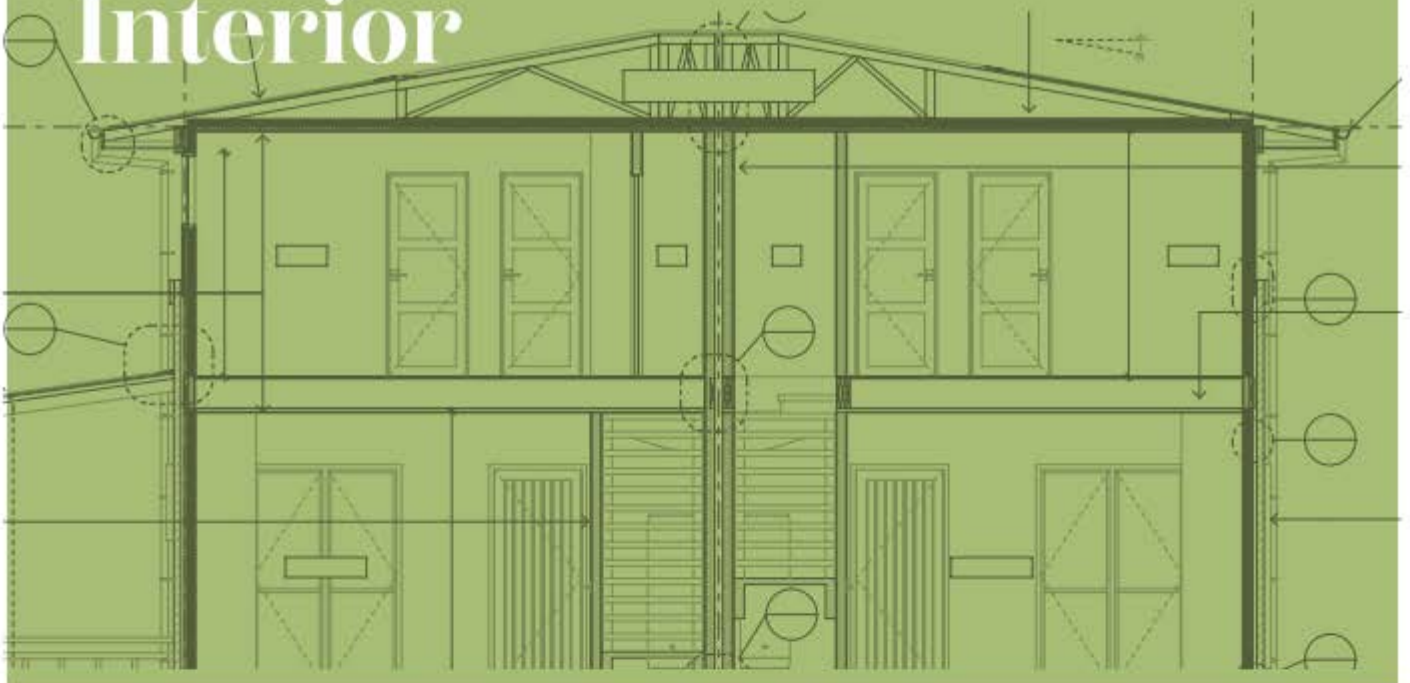
- Concrete entry footpath or selected paving
- Carpark space on private driveway in broom finish concrete
- Low maintenance ground cover, hedging and feature planting to gardens
- Letter box as per builder's selection

Fence

- Timber fence as per builder's selection

Disclaimer: This is a preliminary document prepared prior to the commencement of construction for marketing purposes. Should a product become unavailable the developer reserves the right to make changes to these specifications at their discretion, however it will be with another product that is of similar standard and style.

Interior



Flooring

Lounge, Kitchen & Dining:

- Engineered wooden flooring to areas as defined on floor covering plans

Laundry & WC:

- Full bodied ceramic floor tiles with 55mm timber skirting or 150mm tiles skirting

Bedrooms and Stairs

- Residential heavy-duty carpet on 100kg underlay, with smooth-edging, to areas as defined on floor covering plans

Bathroom & Ensuite

- Full bodied ceramic floor tiles, full height tiles to bathroom area

Interior Linings

- Plasterboard walls and ceilings stopped and painted to level 4 finish
- Water resistant plasterboard to all bathrooms and wet areas
- Insulated to exceed current NZ Standards for thermal insulation
- Pine skirting - paint finish
- 55mm classic gib cove throughout paint finish

Doors

- Hollow core doors, paint finished
- Door Hardware
- Satin chrome lever action

Internal Hand Rails

- Timber or power-coated aluminium handrails

Electrical:

Lounge Area:

- Minimum 2x double power points

Dining Area:

- Minimum 1x double power points

All Double Bedrooms:

- Minimum 1x double power points

Kitchen:

- Minimum 1x double power points

Laundry:

- Minimum 1x double power points

Bathroom:

- Minimum 1x double power points with RCD, 1x heater towel rail direct connection

TV:

- Minimum 1x wall outlet is provided in living area

Lighting

Lounge:

- Minimum 2x recessed LED downlights

Kitchen:

- Minimum 2x recessed LED downlights

Dining:

- Minimum 2x recessed LED downlights

Bedrooms:

- Minimum 2x recessed LED downlights

Entry Door and Courtyard:

- Minimum 1x exterior soffit downlight to wall light with motion sensor
- Minimum 1x exterior wall light

Mechanical Ventilation:

- Mechanical ventilation system available in each unit subject to council requirement
- 1x ducted extract from each bathroom, WC/ Laundry to external vent

Fire Protection

- Battery smoke alarm to meet code requirements

Disclaimer: This is a preliminary document prepared prior to the commencement of construction for marketing purposes. Should a product become unavailable the developer reserves the right to make changes to these specifications at their discretion, however it will be with another product that is of similar standard and style.

Kitchens, bathrooms, & laundry

Kitchen Fittings

Features:

- Pantry cupboard, storage cupboards and/or drawers, hob, oven, and cupboards, pull out drawer with proprietary bin inserts or undersink door mounted bin

Mechanisms:

- Metal cabinetry hinges, selected chrome finish pull handles

Cabinetry:

- Laminate finish

Bench Top:

- Engineered Stone, 20mm thickness

Sink:

- Stainless steel sink

Splash Backs:

- Tiled

Kitchen Tap:

- Englefield studio kitchen mixer

Plumbing Fixtures

Hot Water Cylinder:

- 180 litre hot water cylinder

Kitchen Appliance

TYPE A

Oven:

- Haier built in 60cm self-cleaning wall oven

Hobs:

- Haier 60cm, 4 hobs electric cooktop

Rangehood:

- Fisher and Paykel built-in stainless steel ducted extraction power pack

Dishwasher:

- Haier 45cm stainless steel

TYPE B

Oven:

- Fisher and Paykel built in 60cm stainless steel wall oven

Hobs:

- Fisher and Paykel 60cm, 4 hobs electric cooktop

Range Hood:

- Fisher and Paykel built-in stainless steel ducted extraction power pack

Dishwasher:

- Fisher and Paykel 60cm stainless steel

Bathroom Fittings

WC:

- Englefield wall hung or free standing white vanity

Shower:

- Frameless shower panel and door
- Englefield studio shower slider with Englefield studio shower mixer

Misc Fittings:

- Toilet roll holder in polished chrome

Heated Tower Rail:

- Chrome finish heated tower rail to each bathroom

Mirror:

- Fixed mirror mounted above vanities in all bathrooms and WC

Vanity:

- Englefield wall hung or free-standing vanity with Englefield studio basin mixer

Laundry:

- Laundry areas incorporate services connections for washing machine

Disclaimer: This is a preliminary document prepared prior to the commencement of construction for marketing purposes. Should a product become unavailable the developer reserves the right to make changes to these specifications at their discretion, however it will be with another product that is of similar standard and style.

1



2



3



4



1. Electric Cooktop

Fisher & Paykel 60cm 4 Zone, Dual Element (CE604CBX2)

The Fisher & Paykel dial control 60cm 4 zone electric cooktop is designed for easy everyday cooking.

- A compact cooking area with four cooking zones including a dual element
- High speed ribbon elements heat up quickly for ideal heat distribution
- Elements that glow red until they are safe to touch
- Ceramic glass with black glass

2. Dishwasher

Fisher & Paykel 15 Place Settings (DW60FC2X1)

This Fisher & Paykel Dishwasher provides a superior wash with 3 phase filtration and is designed to match the Fisher & Paykel family of kitchen appliances.

- 6 wash programs to suit any load from Delicate to Heavy
- Auto-sensing option for easy operation
- Stainless Steel

3. Rangehood

Fisher & Paykel 60cm built-in Integrated (HP60ICSX3)

These Fisher & Paykel integrated rangehoods are hidden from view. They are easy to install and efficiently remove steam, smoke, and lingering odours.

- Brushed Stainless Steel

4. Built-in Oven

Fisher & Paykel 60cm 85L, 5 Function (OB60SC5CEX1)

This Fisher & Paykel 60cm, 85L built-in oven with five functions gives you a spacious cavity to suit your cooking needs.

- 85L total capacity
- Five oven functions including Fan Bake and Pastry Bake
- Cool Touch door effectively keeps in heat to improve energy efficiency
- Brushed Stainless Steel with black glass

Disclaimer: This is a preliminary document prepared prior to the commencement of construction for marketing purposes. Should a product become unavailable the developer reserves the right to make changes to these specifications at their discretion, however it will be with another product that is of similar standard and style.



1. Electric Cooktop

Haier 60cm 4 hob, Electric Cooktop (HCE604TB3)

Key Features:

- Four elements for different sized cookware
- Intuitive touch controls
- Designed to pair with a Haier wall oven in black glass
- Spill detection alert for safety

2. Dishwasher

Haier 45cm stainless steel (HDW9TFE3SS2)

Key Features:

- Stainless steel
- 9 place setting
- Delay start function
- 7 clean programs

3. Rangehood

Fisher & Paykel 60cm built-in Integrated (HP60ICSX3)

Key Features:

- These integrated rangehoods are hidden from view. They are easy to install and efficiently remove steam, smoke, and lingering odours.
- Brushed Stainless Steel

4. Built-in Oven

Haier 60cm Single Built-in Oven (HWO60S7EX2)

Key Features:

- 7 cooking functions
- Cool-to-touch door for safety
- Easier cleaning with self-cleaning side panel and removable oven door
- Able to program cooking duration or delay cooking

Disclaimer: This is a preliminary document prepared prior to the commencement of construction for marketing purposes. Should a product become unavailable the developer reserves the right to make changes to these specifications at their discretion, however it will be with another product that is of similar standard and style.